

Information on Reserve Capacity

Digital RAG/TAG

11/12/20

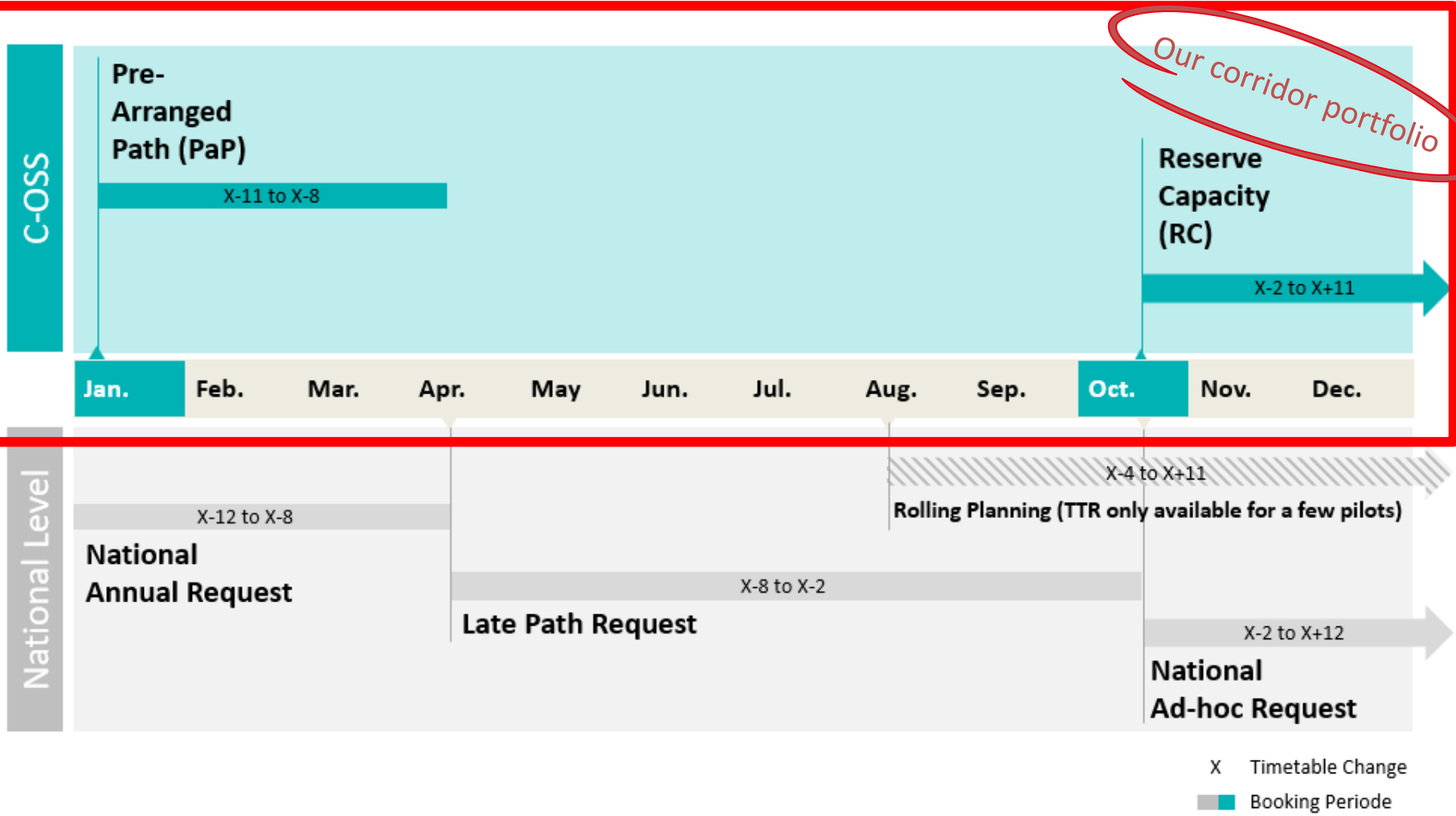
COSS – Paul Dippmann



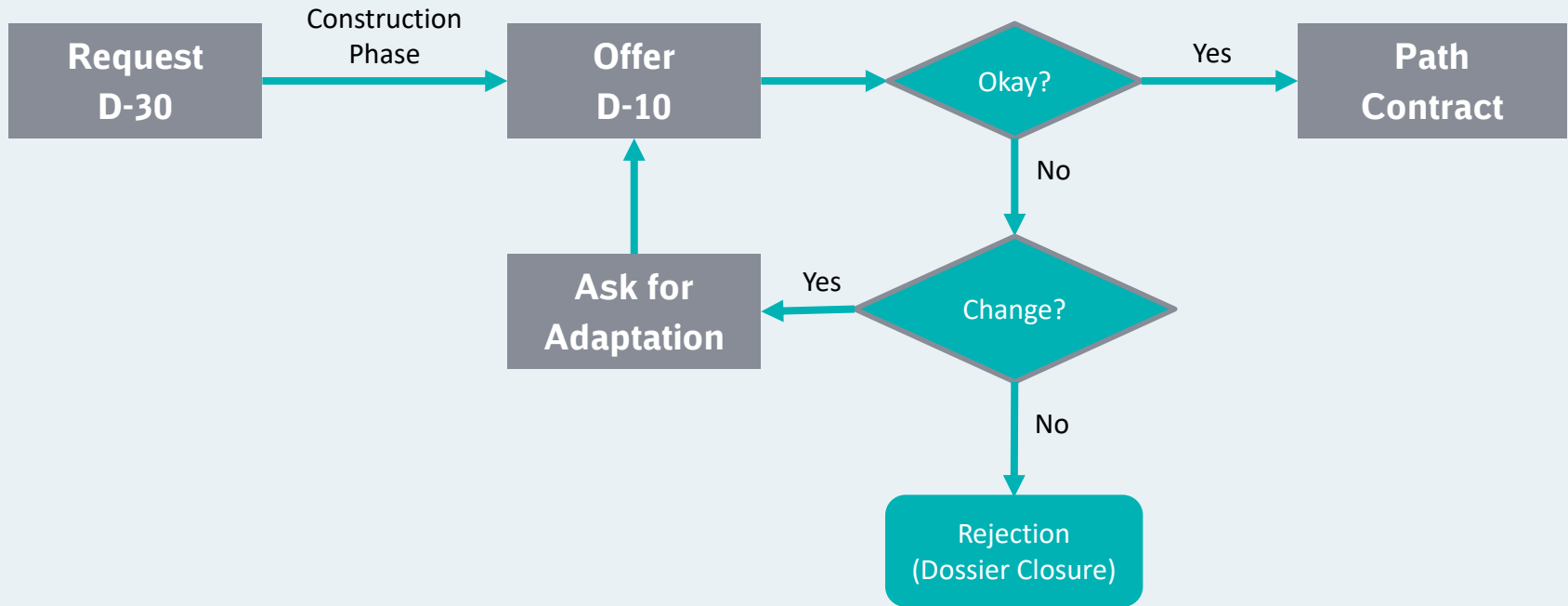
Co-financed by the Connecting Europe
Facility of the European Union



Capacity Portfolio at C-OSS and National Level



RC process description



D-30 = 30 Days before First Train Run
D-10 = 10 Days before First Train Run

➤ Reserve Capacity for TT2021 is published and can be requested!

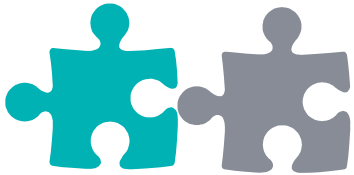
Benefits



PCS as the **only IT-tool** allows the applicants to place the request and to check and accept the international offer from origin to destination



The C-OSS as **one single contact person** simplifies the handling of the request between the applicants and all involved Infrastructure Managers



The processing of the request via the C-OSS ensures a **harmonized offer with coordinated border times**



Bandwidth approach allows the applicants to place a request according to their needs and guarantees a **customized offer**



More information can be found in CIP (Customer Information Platform) [Link](#) and our homepage <https://www.scanmedfreight.eu/>